



**FRESNO'S CHAFFEE ZOO CORPORATION
REQUEST FOR PROPOSAL
PROFESSIONAL ARCHITECTURAL/ENGINEERING SERVICES FOR NEW ZOO ENTRANCE**

ADDENDUM No. 1

Exhibit 1 – See the attached diagram showing the limits of work.

Exhibit 2 – See the attached Master Plan for reference only.



LIMITS OF WORK



Master Plan

June 2022



MISSION



*We inspire people to care for animals, create connections,
build community, and save wildlife.*

VISION



*A just future that begins with us and makes possible a world
where people and wildlife thrive together.*



We inspire people to care for animals, create connections, build community, and save wildlife.

SAVING WILDLIFE

BUILDING TEAMS

RESPONSIBLE
BUSINESS

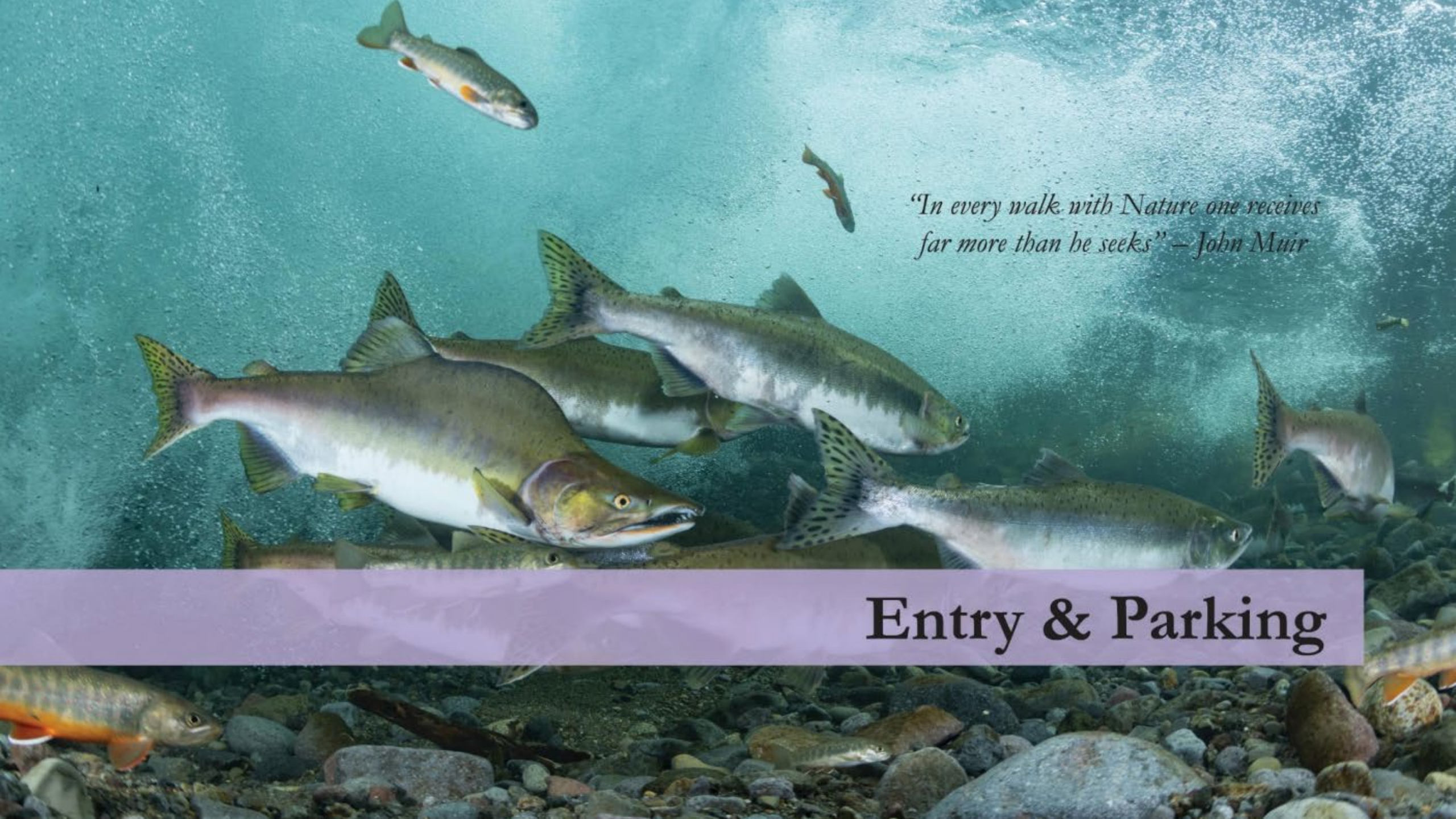
STRENGTHENING
COMMUNITY

Our Core Values:

- **United:** *We are one team, working together to support our mission, communities, and each other.*
- **Dedicated:** *We are knowledgeable and passionate, driven to improve, grow, and learn.*
- **Respectful:** *We show respect for one another and the unique contributions we each make to our institution.*
- **Grateful:** *We appreciate the support of our community, the people we work with, and the treasures of the natural world.*
- **Welcoming:** *We work to ensure that everything we do is accessible and inclusive of all.*
- **Aspirational:** *Through our work, we will have a positive impact on nature, people, and wildlife.*

Master Plan

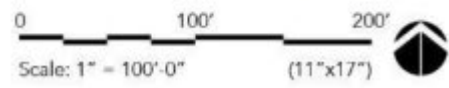


An underwater photograph of several salmon swimming in a river. The water is clear and blue-green. The salmon are silvery with some orange and yellow markings. They are swimming towards the right. The riverbed is covered with dark, smooth rocks. The lighting is bright, creating a shimmering effect on the water's surface.

*"In every walk with Nature one receives
far more than he seeks" — John Muir*

Entry & Parking

Entry & Parking



Entry & Parking

Overview

The new entry to the Fresno Chaffetz Zoo is located in the General Valley of California. Drawing inspiration from the existing farmland, the new entry features a series of landscaped paths that connect the existing parking areas around the Zoo with new parking garages. Together, they create a new, shaded route to an impactful new entry and arrival place that establish a new sense of place and a welcoming ambience. The new entry reimagines the experience of visiting, membership, guest services, restaurants, and retail, preparing the Zoo to handle more than one million visitors a year.

Program

Parking Garage 1	300 Spaces
Parking Garage 2	300 Spaces
Animal Plaza	6,000 SF
Retail	6,000 SF
Guest Services	6,000 SF
Membership	6,000 SF





Rice University Cambridg Office Garage, Houston, TX

- Tensile Mesh Facade, Custom Printed with Leaf Pattern Image



T3 Parking Structure, Austin, TX

- Living Vegetation Facade



San Antonio Zoo Parking Garage, San Antonio, TX

- Living Vegetation Facade
- Zoo Sign



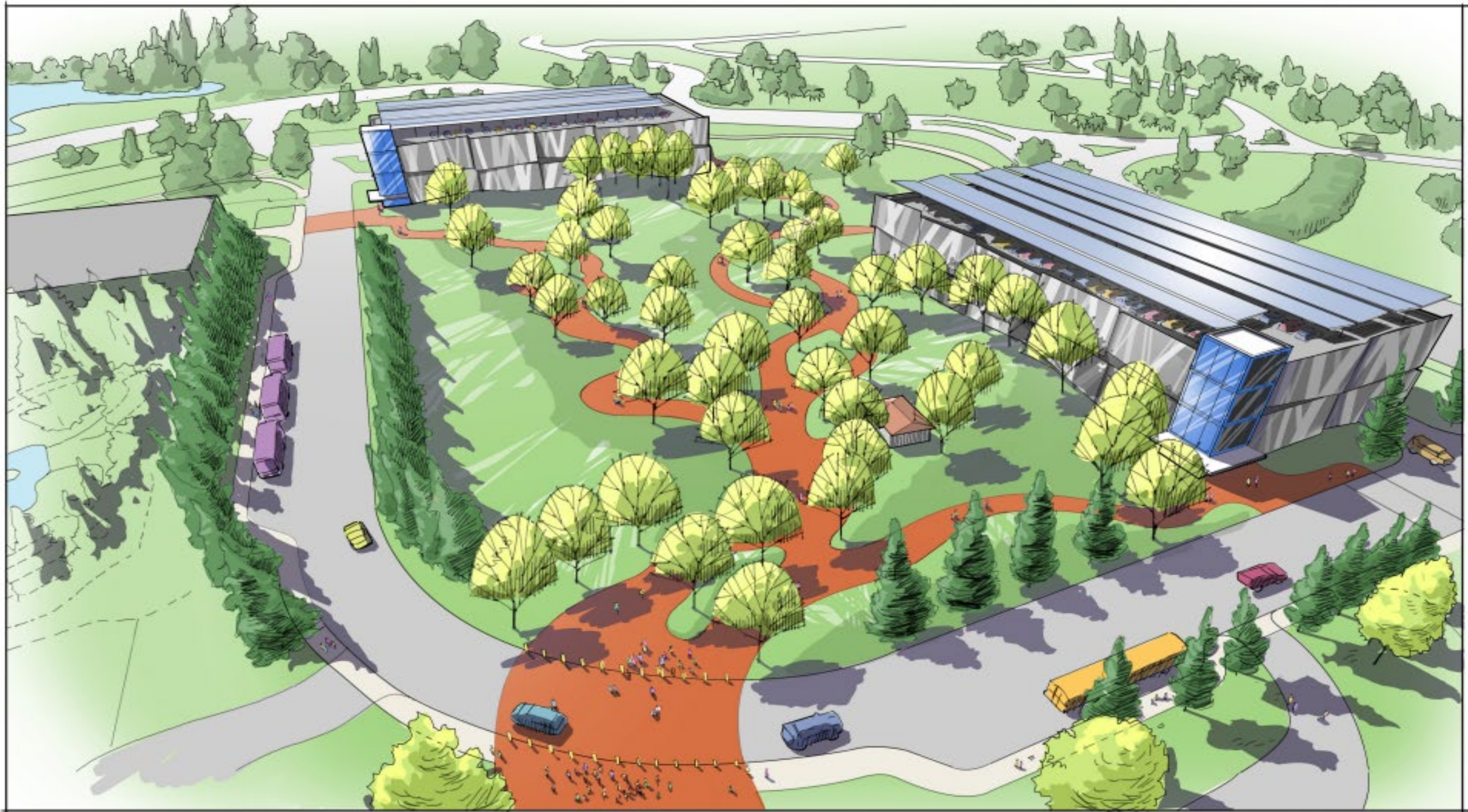
Crocker Park Parking Garage, Westlake, OH

- Tensile Mesh Facade, Custom Printed with Tree Pattern Image

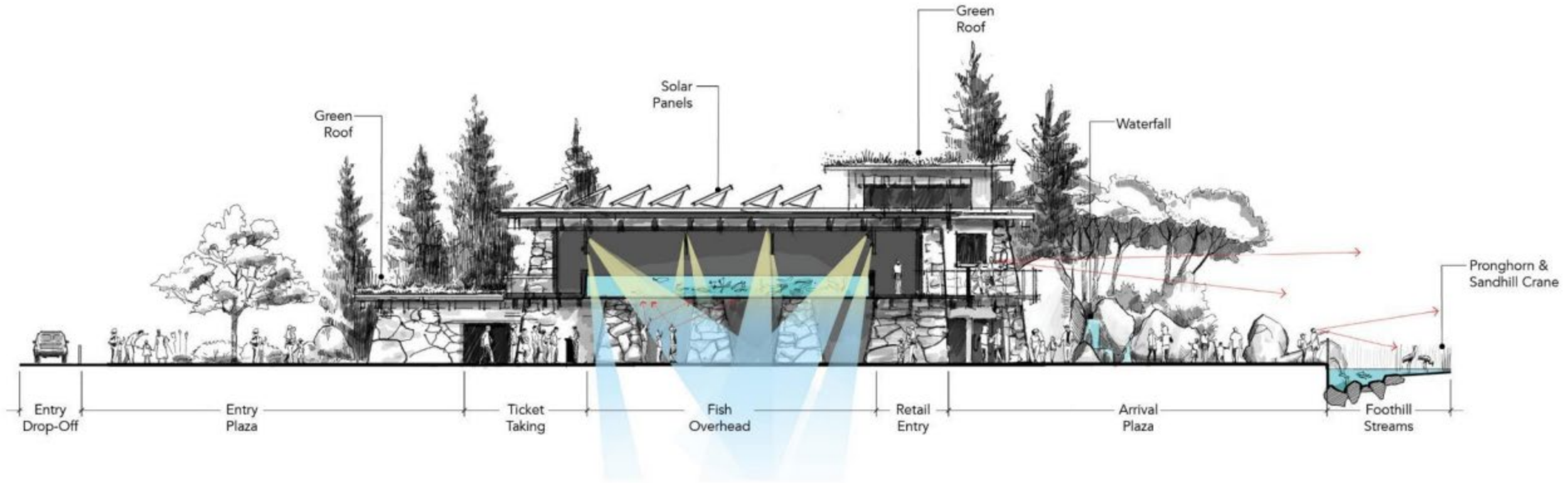



Lawson Lane Campus, Milpitas CA

- Bronze Mesh







A close-up photograph of two coyotes howling. The coyote in the foreground is in sharp focus, its mouth wide open, showing its teeth and tongue. Its eyes are closed, and its head is tilted back. The second coyote is in the background, slightly out of focus, also howling with its mouth open. The background is a dark, blurred green, suggesting a natural outdoor setting.

“...A landscape was displayed that after all my wanderings still appears as the most beautiful I have ever beheld. At my feet lay the Great Central Valley of California, level and flowery, like a lake of pure sunshine” – John Muir

California

California



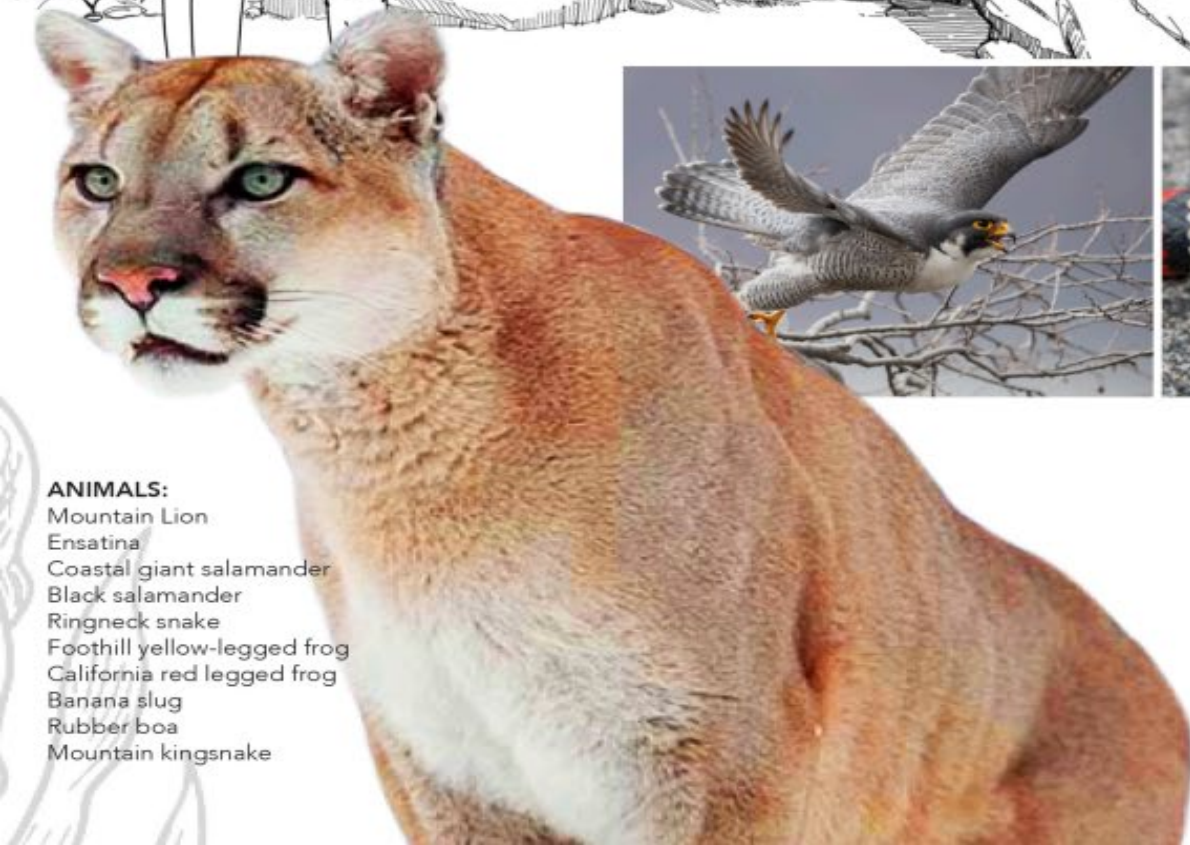
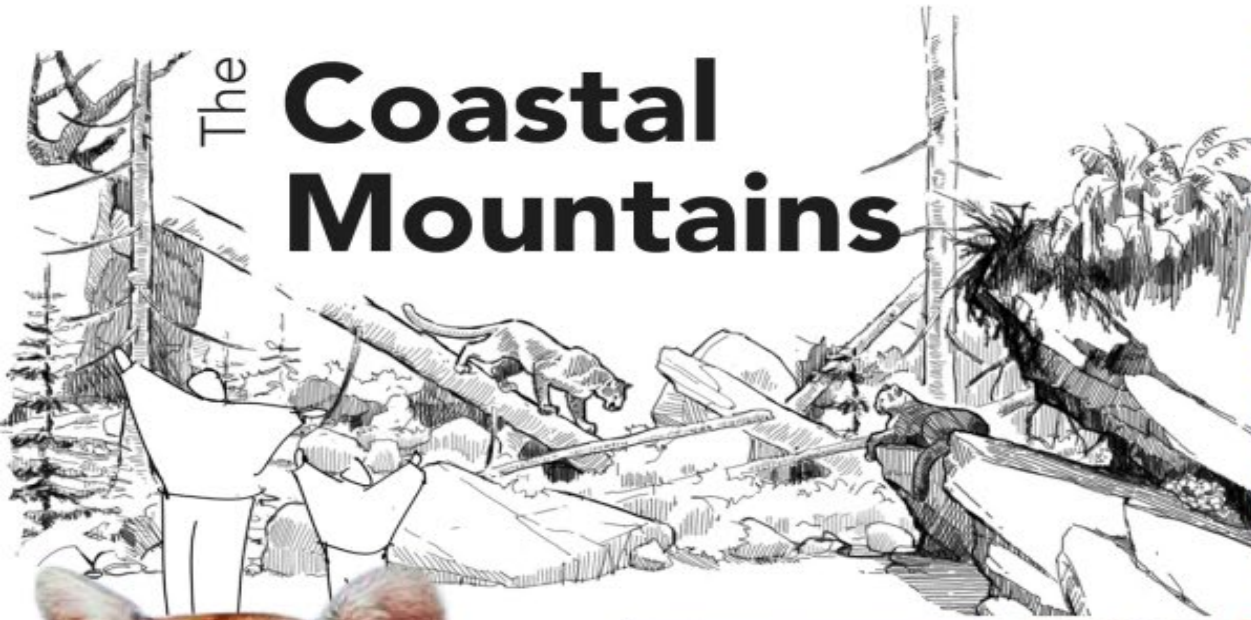
The California Coast



ANIMALS:
California sea lion
Harbor seal



The Coastal Mountains



ANIMALS:

Mountain Lion
Ensatina
Coastal giant salamander
Black salamander
Ringneck snake
Foothill yellow-legged frog
California red legged frog
Banana slug
Rubber boa
Mountain kingsnake



The San Joaquin Valley

Grasslands & Wetlands

ANIMALS:

San Joaquin kit fox
Tricolored blackbird
Rails
Heron
California black crane
Shrike
Western pond turtle
Giant garter snake
Red sided garter snake
Red legged frog



Rivers and Streams



ANIMALS:
River otter
Bald eagle
Salmon
White sturgeon
Golden trout
California tiger salamander
Spadefoot toad




The Sierra Foothills



ANIMALS:

Wolf
Pronghorn
Sandhill crane
Blunt nose leopard lizard
Coast Horned lizard
Kangaroo rats
Coachwhips
Burrowing Owl
Grey Fox

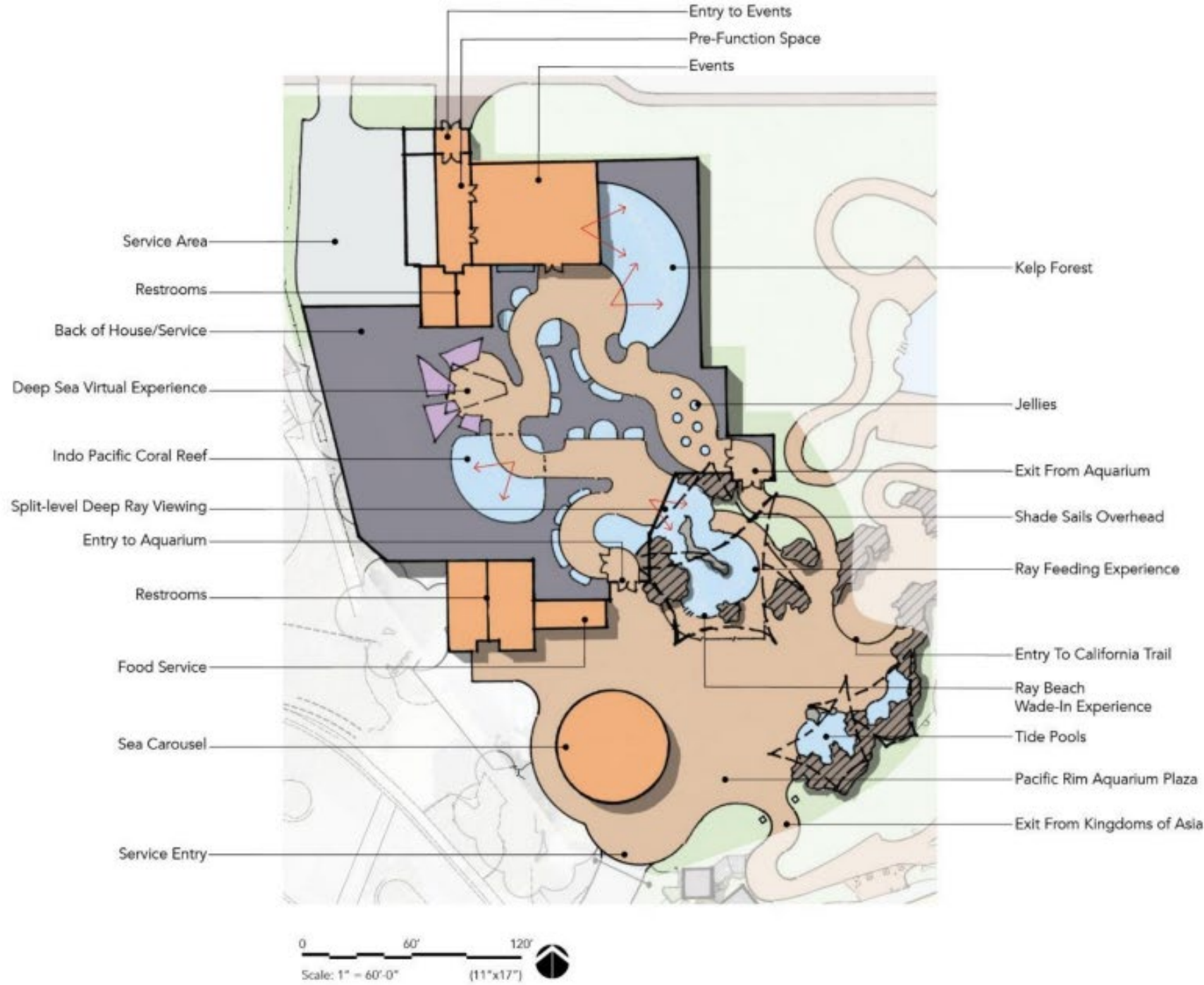


A large, sleek shark, likely a Great White, is the central focus, swimming towards the left. Its mouth is slightly open, revealing rows of sharp, white teeth. The shark's body is a mix of grey and white, with a prominent dorsal fin and a long, pointed tail. The background is a deep blue ocean with various smaller fish and marine life visible in the distance. The lighting is natural, suggesting an underwater environment.

*"If my soul could get away...I should
follow magnetic streams to their source
and follow the shores of our magnetic
oceans" — John Muir*

Pacific Rim Aquarium

Pacific Rim Aquarium





Kelp Forest




Sea Horses



Ray Wade-in



Jellies




*“When we try to pick out anything by
itself, we find it hitched to everything else
in the Universe” – John Muir*

Events & Education

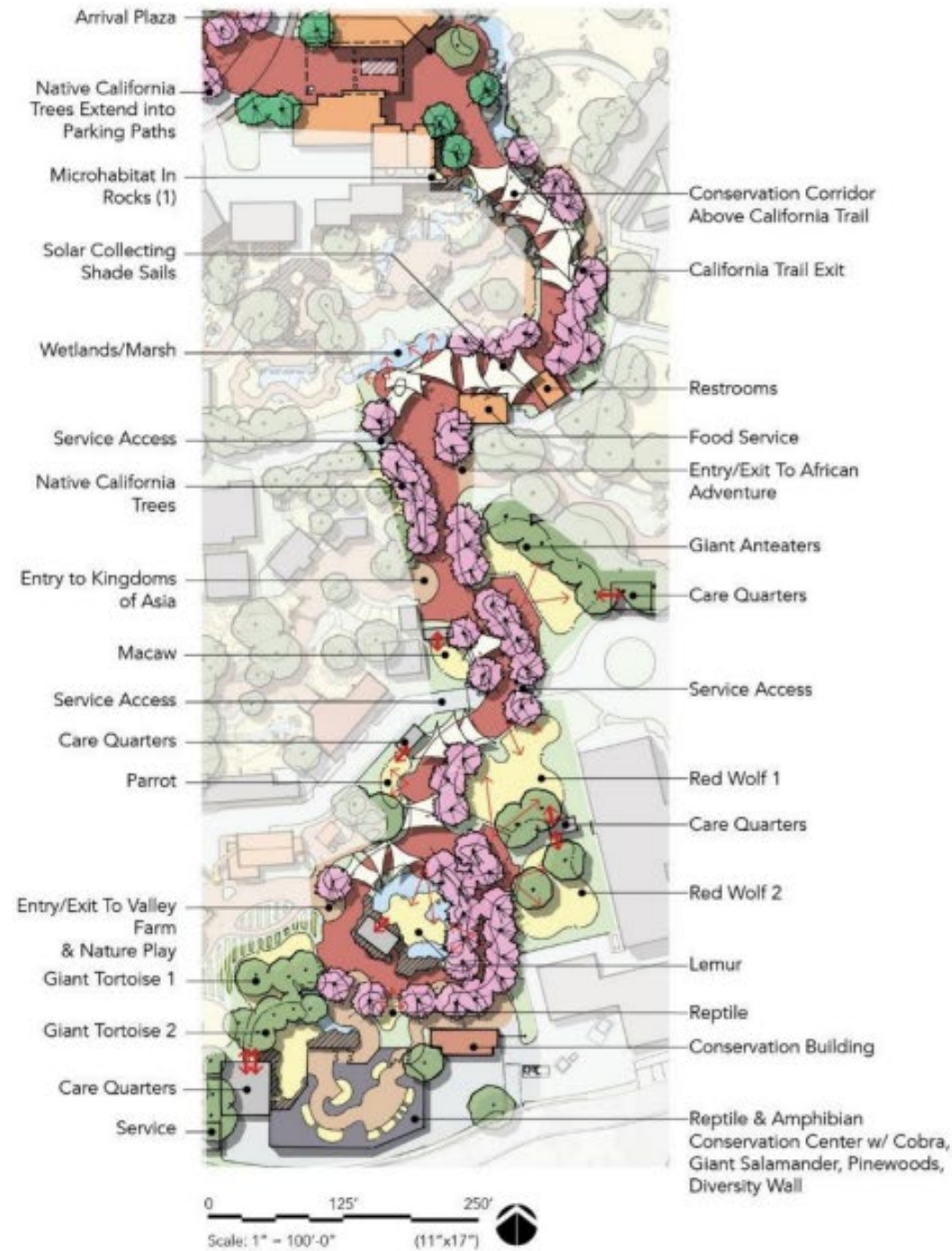
Events and Education



A close-up photograph of two lemurs, likely ring-tailed lemurs, looking out from a rocky ledge. The lemur on the left is in profile, facing right, with its head slightly turned towards the camera. The lemur on the right is facing forward, looking directly at the camera. Both have grey faces with white markings around the eyes and on the ears. Their eyes are a striking orange-yellow color. The background is a soft, out-of-focus green, suggesting a natural habitat.

*"The world's big and I want to have
a good look at it before it gets dark"*
— John Muir

Conservation Corridor

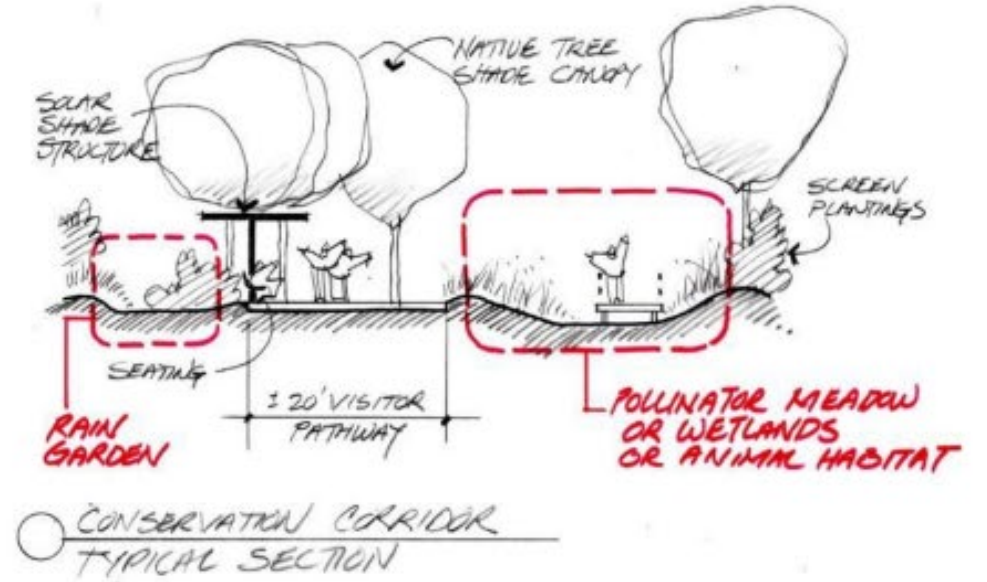


Conservation Corridor



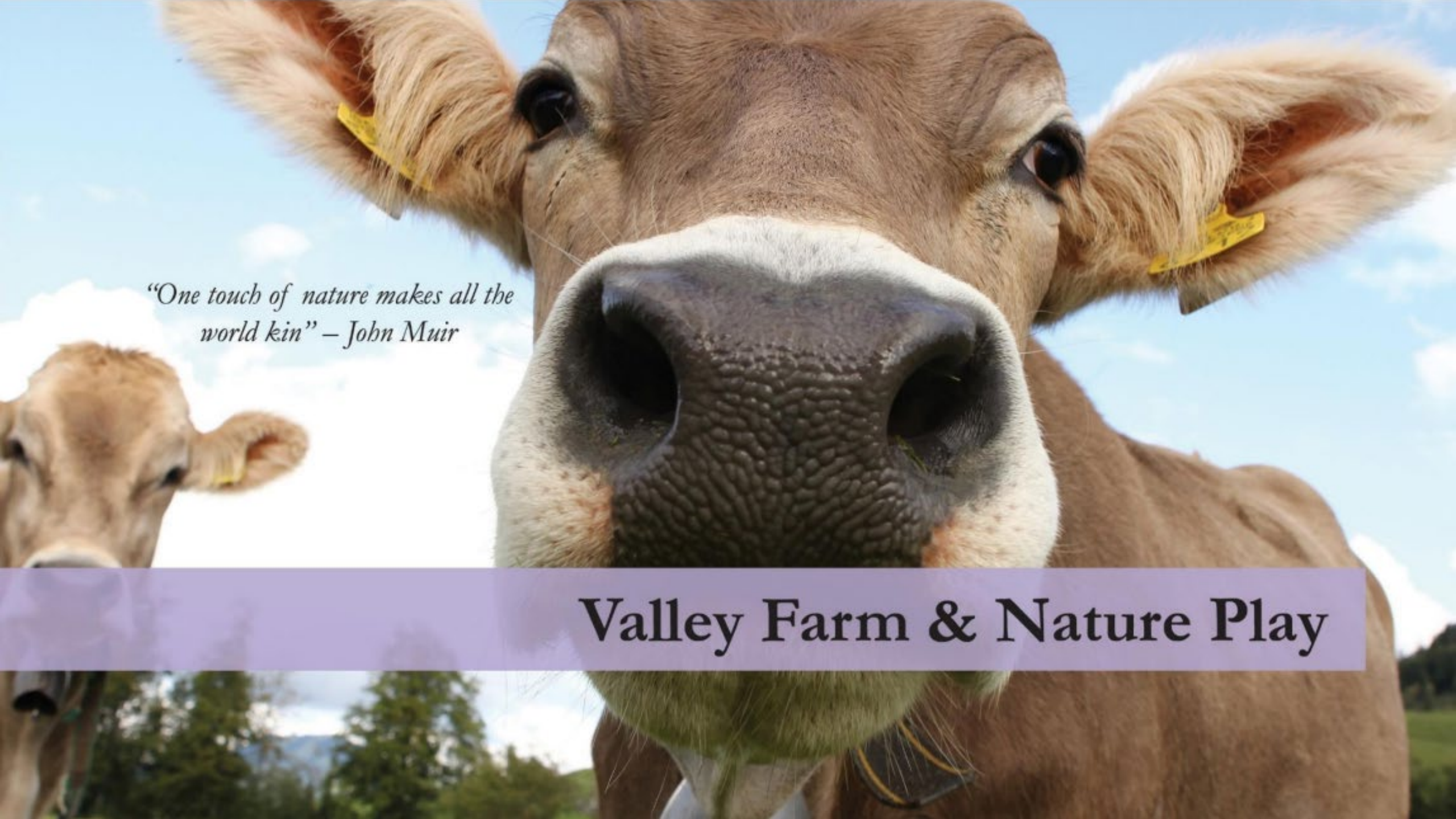


Lemur Habitat



Typical Cross Section Through Conservation Corridor

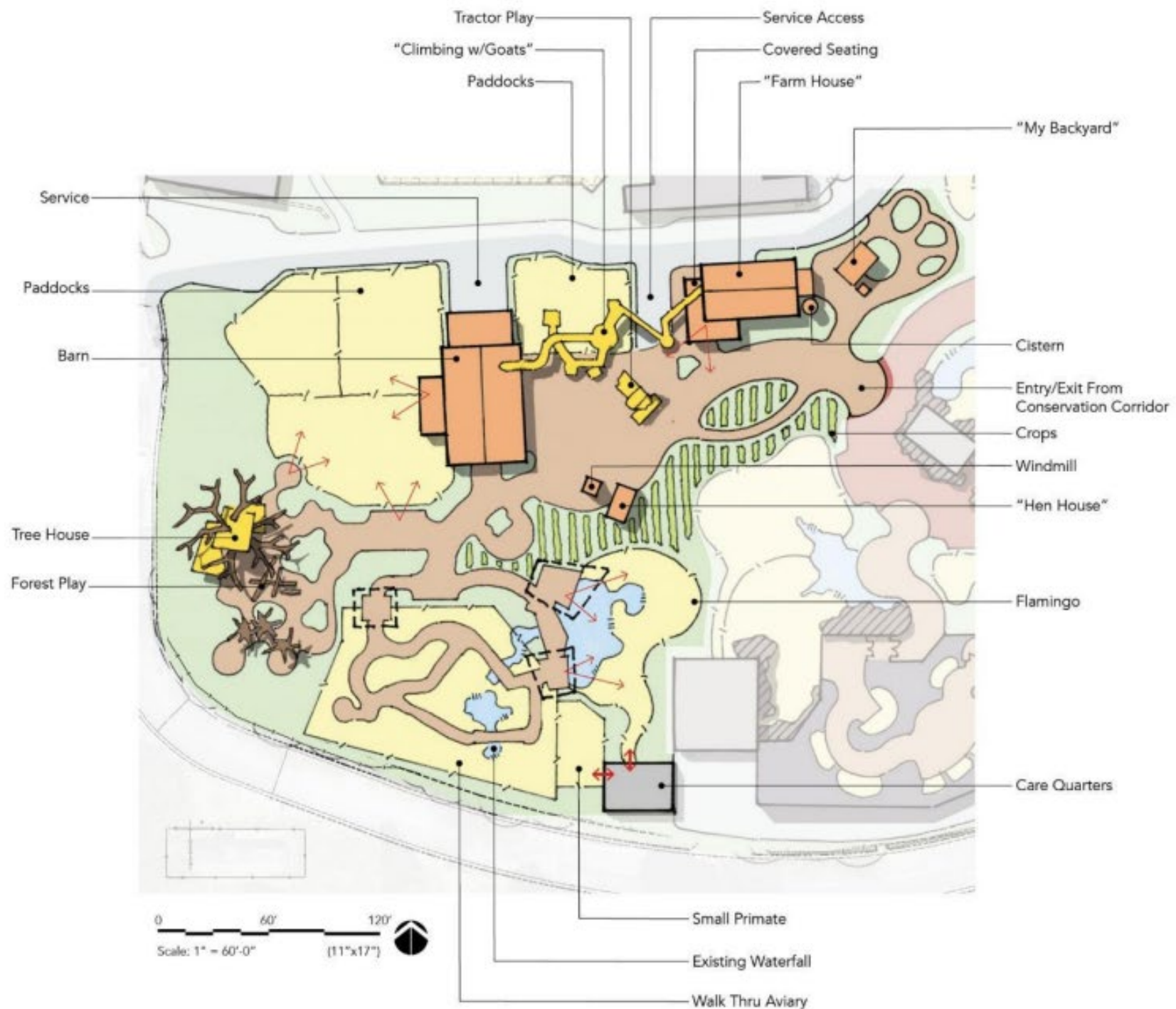


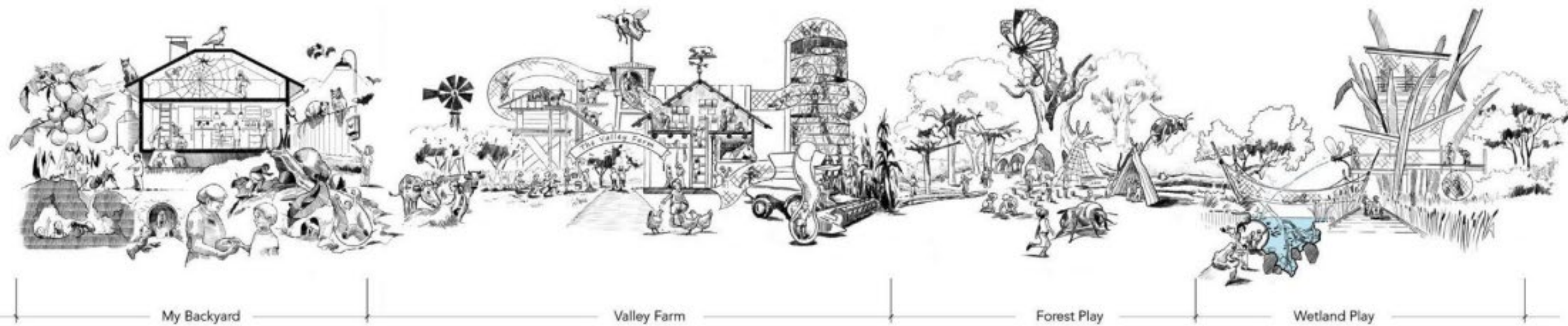


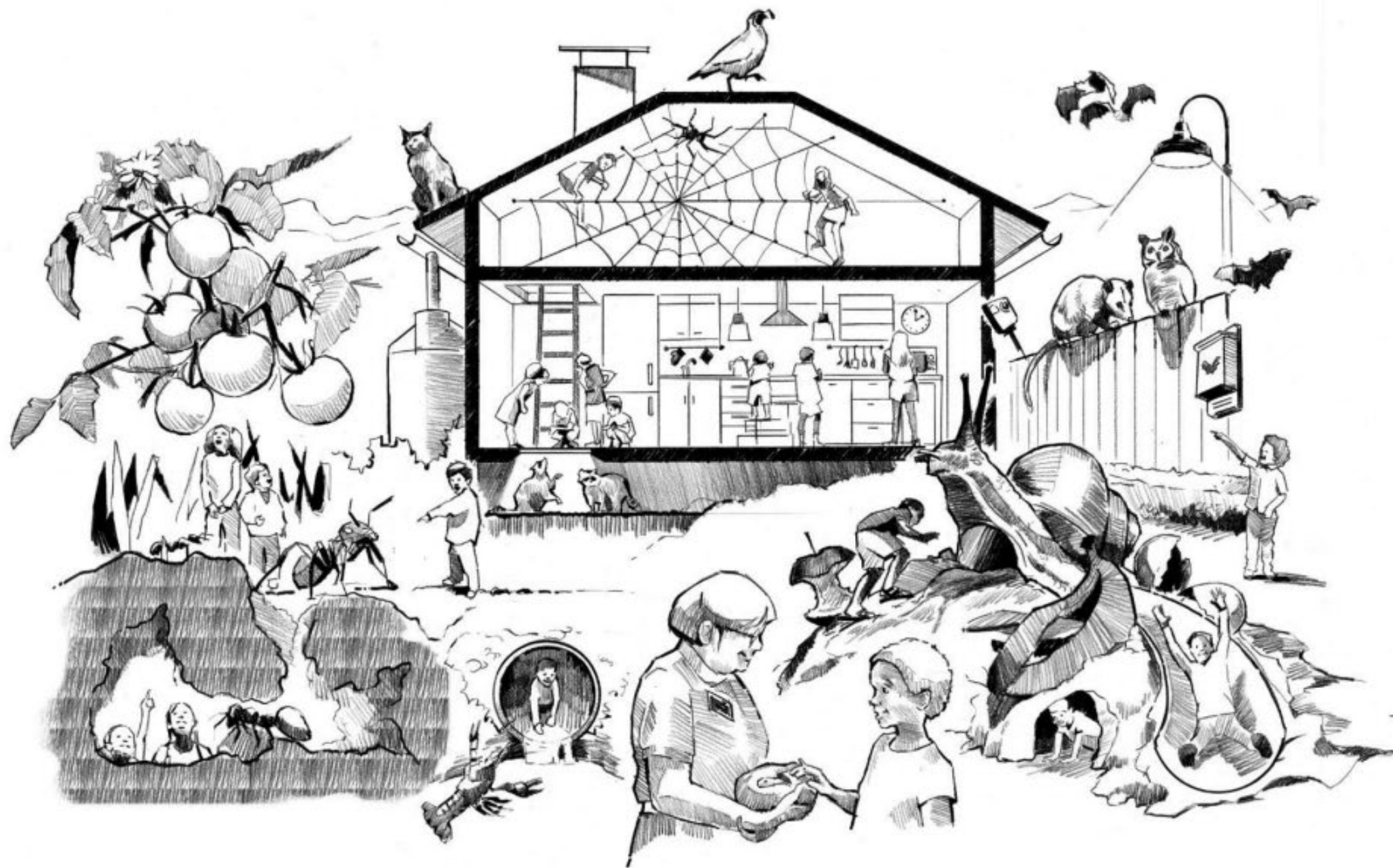
*“One touch of nature makes all the
world kin” – John Muir*

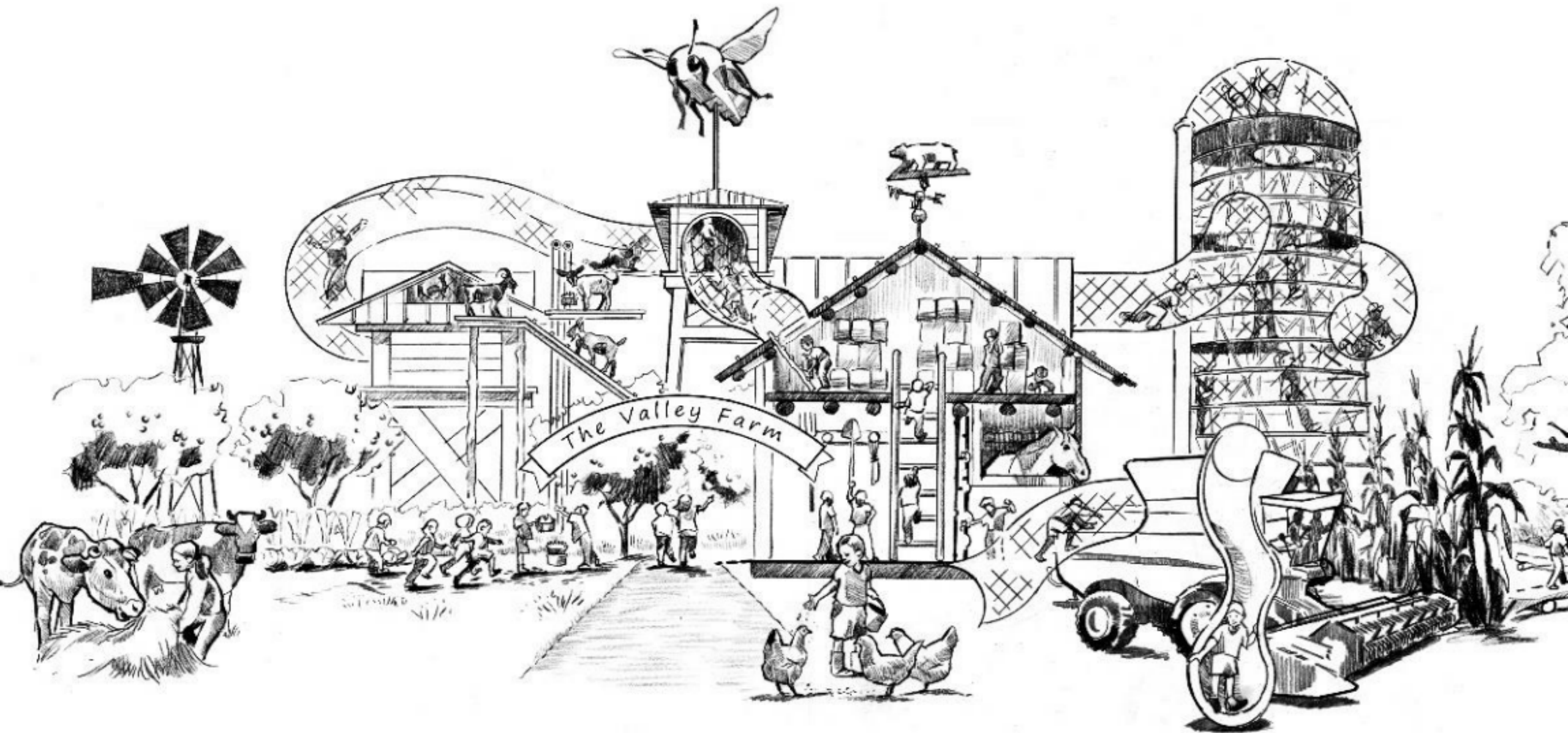
Valley Farm & Nature Play

Valley Farm and Nature Play

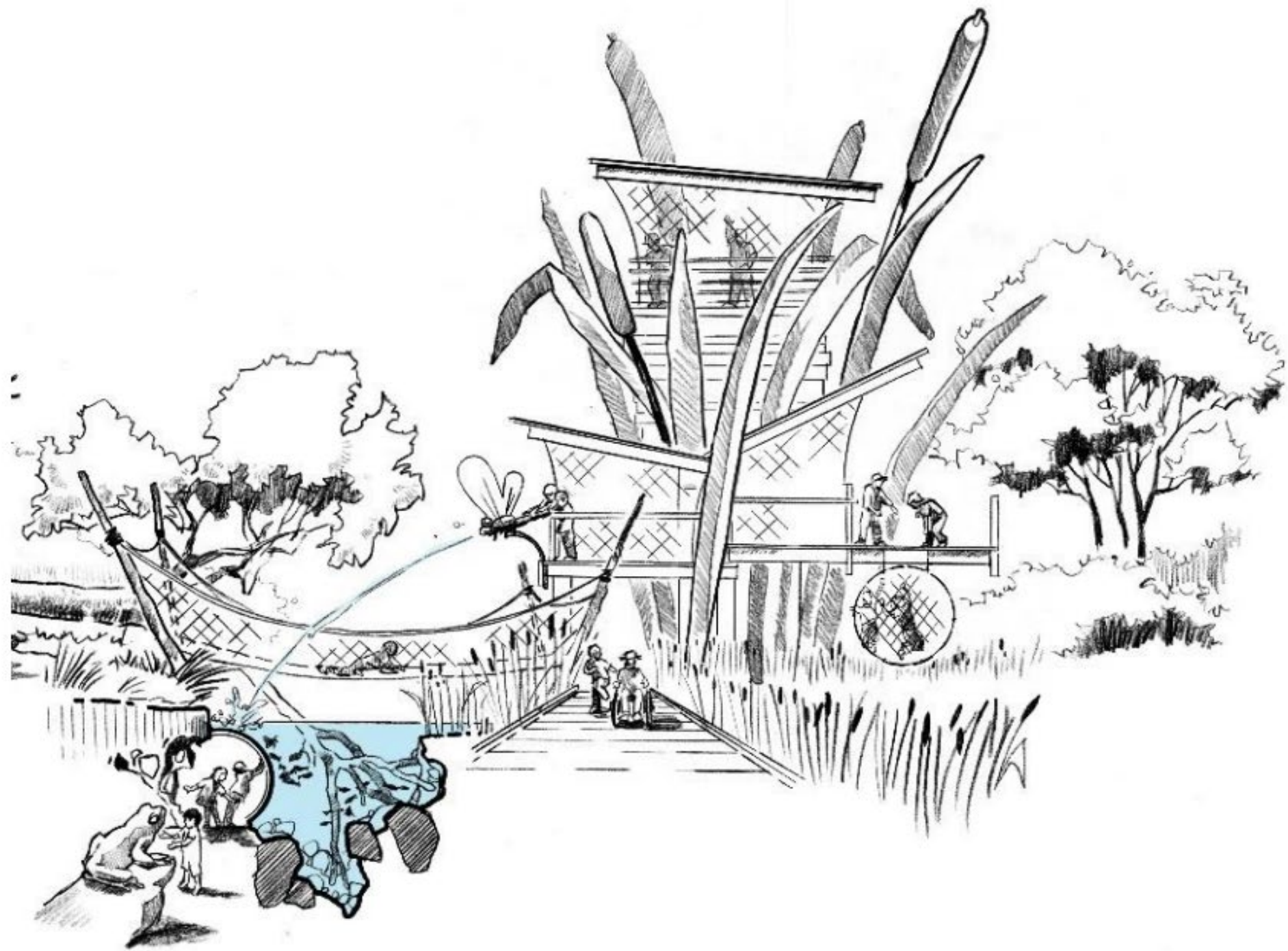








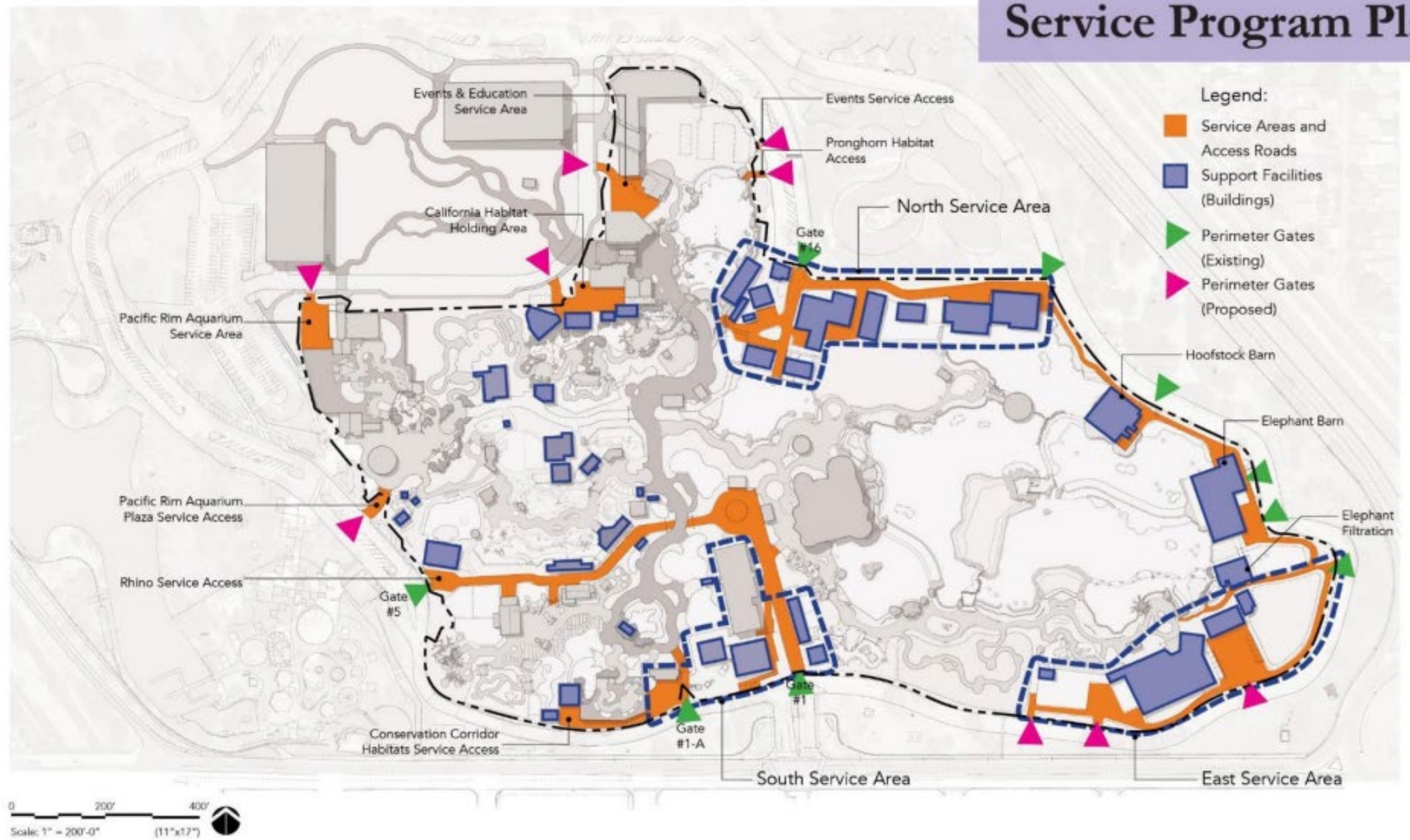




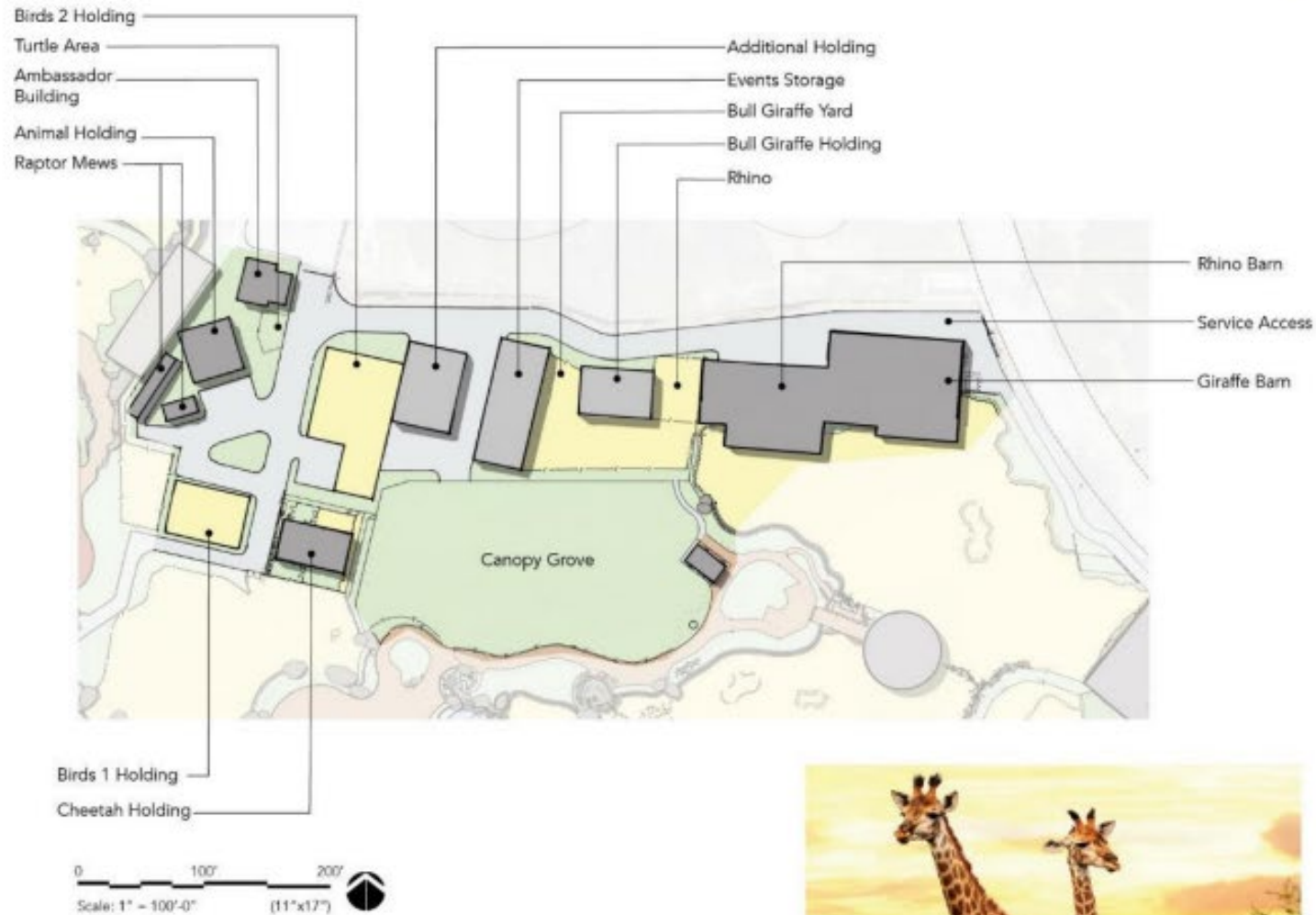


Support Facilities

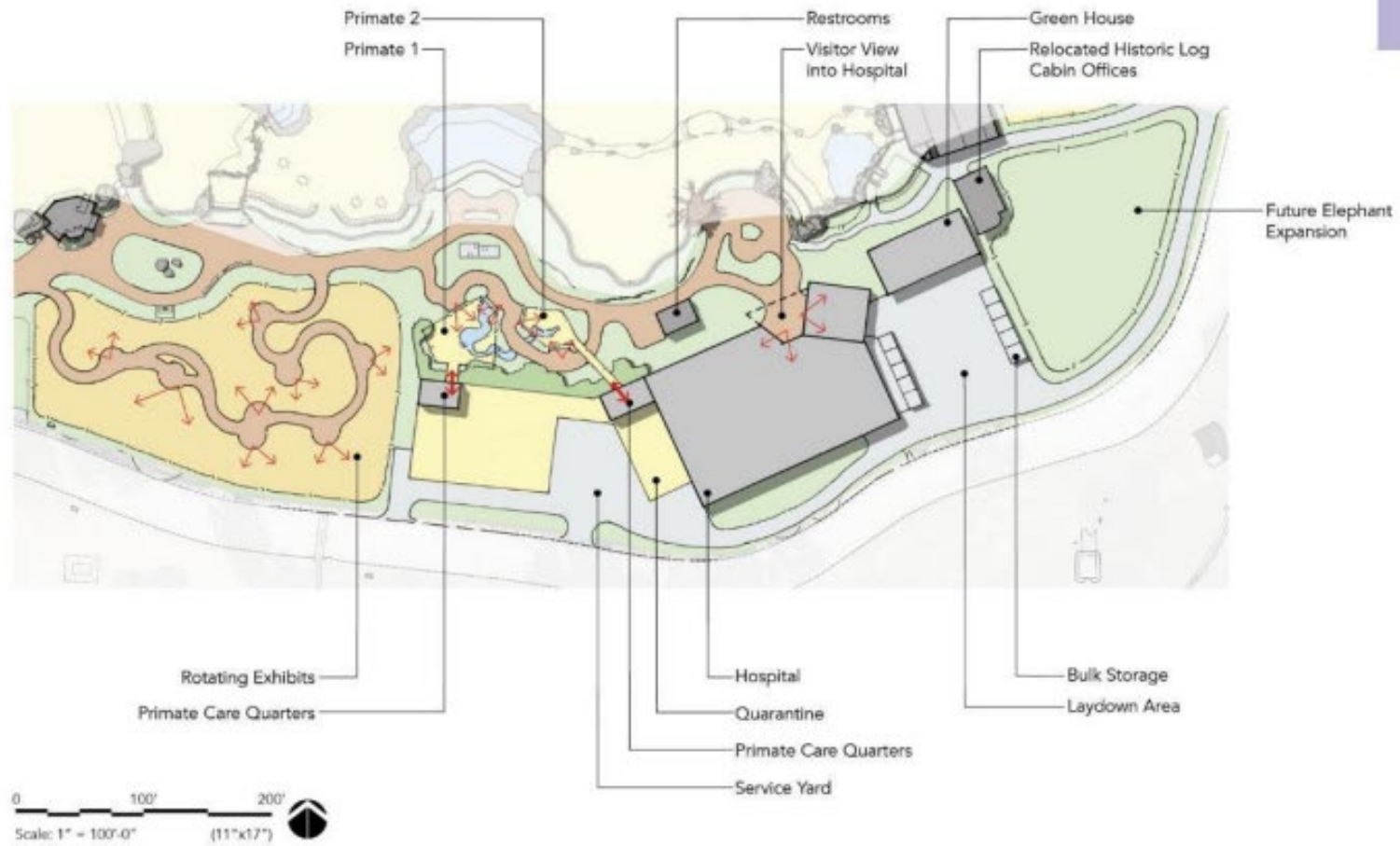
Service Program Plan



North Service Area



East Service Area



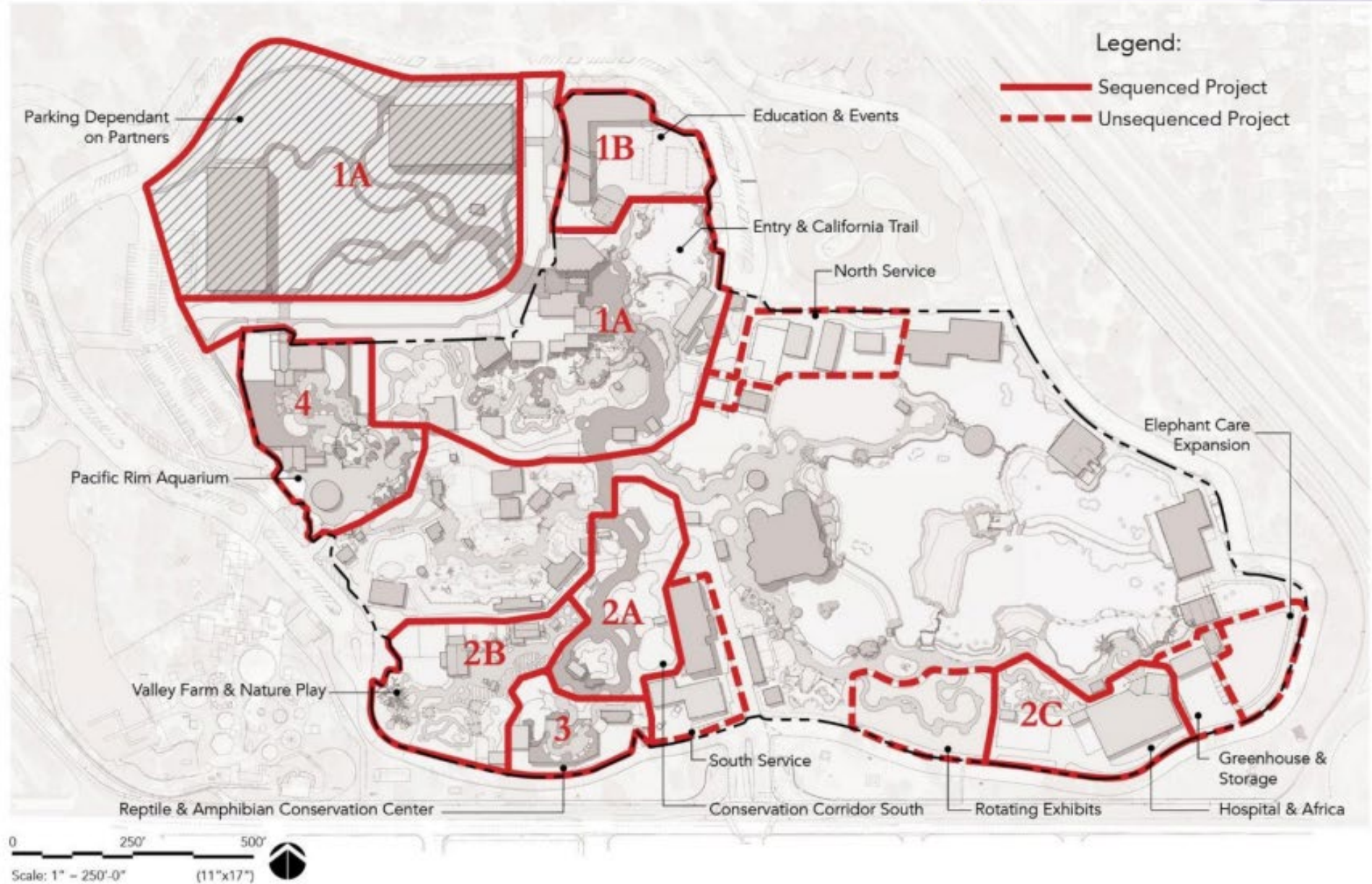
South Service Area





Making it Happen

Master Plan Projects



Master Plan

